



India Meteorological Department
(Ministry of Earth Sciences)

NATIONAL BULLETIN NO. 38 (BOB/04/2023)

TIME OF ISSUE: 1145 HOURS IST

DATED: 25.10.2023

FROM: INDIA METEOROLOGICAL DEPARTMENT (FAX NO. 24643965/24699216/24623220)

TO: CONTROL ROOM, NDM, MINISTRY OF HOME AFFAIRS (FAX.NO. 23093750)

CONTROL ROOM NDMA (FAX.NO. 26701729)

CABINET SECRETARIAT (FAX.NO.23012284, 23018638)

PS TO HON'BLE MINISTER FOR S & T AND EARTH SCIENCES (FAX NO.23316745)

SECRETARY, MOES (FAX NO. 24629777)

H.Q. (INTEGRATED DEFENCE STAFF AND CDS) (FAX NO. 23005137/23005147)

DIRECTOR GENERAL, DOORDARSHAN (23385843)

DIRECTOR GENERAL, AIR (23421105, 23421219)

PIB MOES (FAX NO. 23389042)

UNI (FAX NO. 23355841)

D.G. NATIONAL DISASTER RESPONSE FORCE (NDRF) (FAX NO. 26105912, 2436 3260)

DIRECTOR, PUNCTUALITY, INDIAN RAILWAYS (FAX NO. 23388503)

CHIEF SECRETARY, ODISHA (FAX NO. 0674-2536660)

CHIEF SECRETARY, WEST BENGAL (FAX NO. 033-22144328)

CHIEF SECRETARY, ANDHRA PRADESH (FAX NO. 0863-2441029, 08645-246600)

CHIEF SECRETARY, TAMIL NADU (FAX NO 044-25672304)

CHIEF SECRETARY, PUDUCHERRY (FAX NO 0413-2334145)

CHIEF SECRETARY, GOVT. OF TRIPURA (FAX NO. 0381-2414013, 2413200)

CHIEF SECRETARY, GOVT. OF MIZORAM (FAX NO. 0389-2322745, 2320588)

CHIEF SECRETARY, GOVT. OF MANIPUR (FAX NO. 0385-2452629)

CHIEF SECRETARY, GOVT. OF NAGALAND (FAX NO. 0370-2270057)

ADMINISTRATOR, ANDAMAN & NICOBAR ISLANDS (FAX NO. 03192- 232656)

Sub: Cyclonic Storm "Hphoon" (pronounced as Hphoon) over coastal Bangladesh weakened into Deep Depression over southeast Bangladesh & adjoining Mizoram

The Cyclonic Storm "Hphoon" (pronounced as Hphoon) over coastal Bangladesh moved nearly northeastwards with a speed of 10 kmph during past 6 hours, **weakened into a Deep Depression** and lay centered at 0830 hours IST of 25th October over southeast Bangladesh & adjoining Mizoram near latitude 22.4°N and longitude 92.4°E, about 60 km east of Chittagong (Bangladesh) and 150 km south-southeast of Aizawl (Mizoram).

It is very likely to move northeastwards and weaken further into a depression during next 06 hours and into a well marked low pressure area during subsequent 06 hours.

Forecast track and intensity are given below:

Date/Time (IST)	Position (Lat. °N/ long. °E)	Maximum sustained surface wind speed (Kmph)	Category of cyclonic disturbance
25.10.23/0830	22.4/92.4	55-65 gusting to 75	Deep Depression
25.10.23/1130	22.8/92.7	50-60 gusting to 70	Deep Depression
25.10.23/1730	23.4/93.2	40-50 gusting to 60	Depression
25.10.23/2330	24.0/93.7	25-35 gusting to 45	Well Marked Low Pressure Area

Warnings:

(i) Rainfall Warning:

Manipur, Mizoram & Tripura and south Assam & Meghalaya: Light to moderate rainfall is very likely at many places over the above region with isolated heavy rainfall over Mizoram on 25th October.

Light to moderate rainfall is very likely at many places over Nagaland, Manipur and east Arunachal Pradesh on 25th & 26th October.

(ii) Wind warning (warning graphics enclosed):

• Northeast Bay of Bengal:

Squally wind speed reaching **50-60 kmph gusting to 70 kmph** is prevailing and likely to decrease gradually becoming **35-45 kmph gusting to 55 kmph** by 25th evening and would decrease thereafter.

• Along & off Bangladesh and north Myanmar coasts:

Squally wind speed reaching **50-60 kmph gusting to 70 kmph** is prevailing **along & off Bangladesh and adjoining north Myanmar coast** and likely to decrease gradually become **35-45 kmph gusting to 55 kmph** by 25th evening and would decrease further thereafter.

• Mizoram, Tripura, south Assam and Manipur:

Squally wind speed reaching **30-40 kmph gusting to 50 kmph** is likely to prevail over Mizoram and Tripura and **Strong wind** speed reaching **25-35 kmph gusting to 45 kmph** over Manipur on 25th October.

(iii) Sea Condition

Northeast Bay of Bengal and along & off Bangladesh & adjoining north Myanmar coasts:
Very rough to rough sea condition would prevail during next 06 hours and would improve thereafter.

(iv) Fishermen Warning (Graphics attached):

Fishermen are advised not to venture into **Northeast Bay of Bengal and along & off Bangladesh & north Myanmar coasts** till 25th October evening.

System is under continuous surveillance and the next bulletin will be issued at 1430 hours IST of 25th October, 2023.

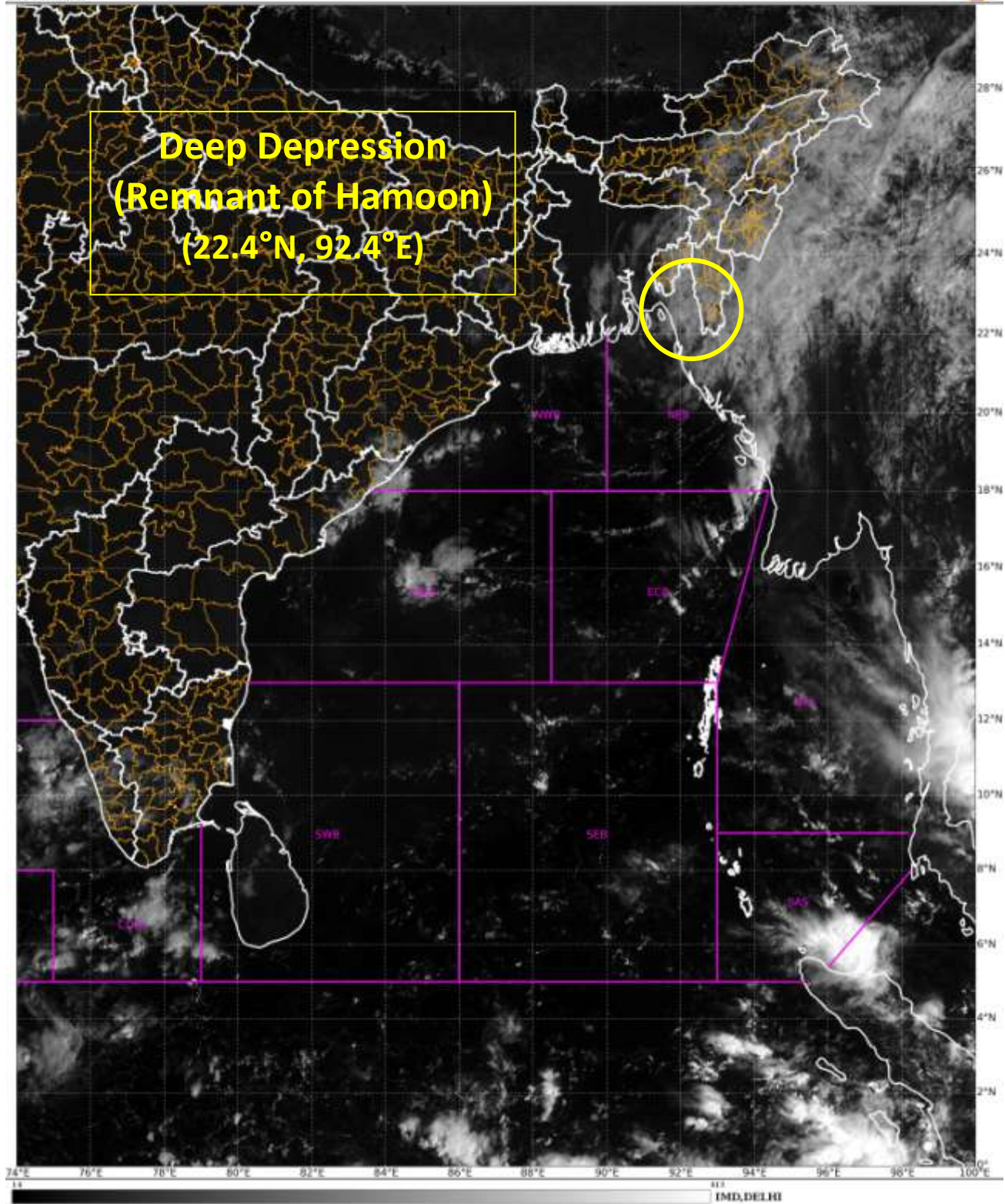
(Akhil Srivastava)

Scientist D, Cyclone Warning Division, New Delhi

Copy to: ACWC Mumbai/ ACWC Chennai/ ACWC Kolkata/CWC Ahmedabad/CWC Bhubaneswar/CWC Vishakhapatnam/CWC Thiruvananthapuram/MC Goa

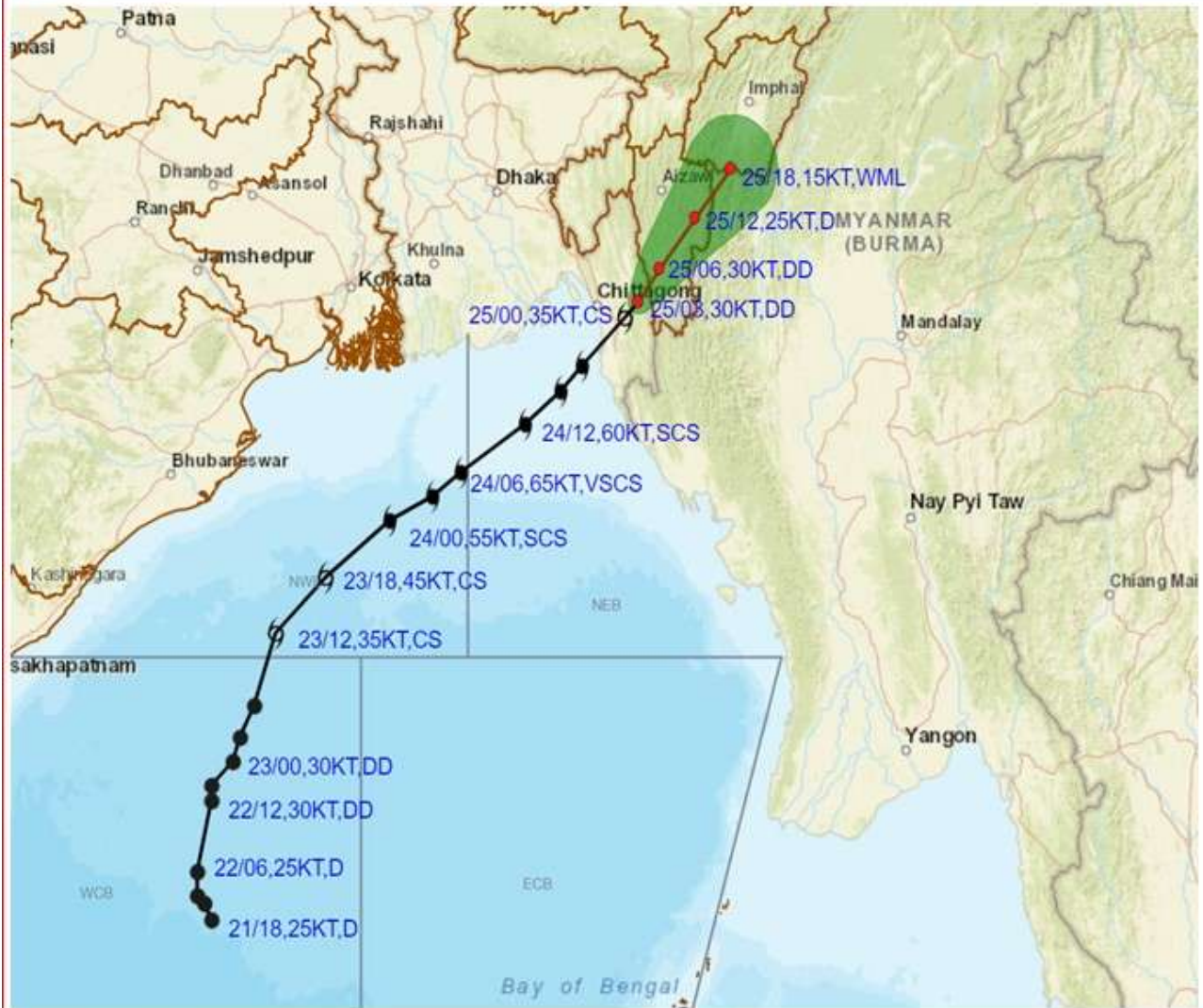
Spatial rainfall distribution: Isolated: <25%, A few: 26-50%, Many: 51-75%, Most: 76-100%

Rainfall amount (mm): Heavy rain: 64.5 – 115.5, Very heavy rain: 115.6 – 204.4, Extremely heavy rain: 204.5 or more.





OBSERVED AND FORECAST TRACK ALONGWITH CONE OF UNCERTAINTY OF DEEP DEPRESSION (REMNANT OF CYCLONIC STORM HAMOON) OVER SOUTHEAST BANGLADESH & ADJOINING MIZORAM BASED ON 0300 UTC (0830 IST) OF 25TH OCTOBER 2023.



DATE/TIME IN UTC

IST=UTC + 0530

L: LOW PRESSURE AREA

WML: WELL MARKED LOW PRESSURE AREA

D: DEPRESSION (17-27 KT)

DD: DEEP DEPRESSION (28-33 KT)

CS: CYCLONIC STORM (34-47 KT)

SCS: SEVERE CYCLONIC STORM (48-63KT)

VSCS: VERY SEVERE CYCLONIC STORM (64-89 KT)

ESCS: EXTREMELY SEVERE CYCLONIC STORM (90-119 KT)

SuCS: SUPER CYCLONIC STORM (\geq 120 KT)

● LESS THAN 34 KT

○ 34-47 KT

⦿ \geq 48 KT

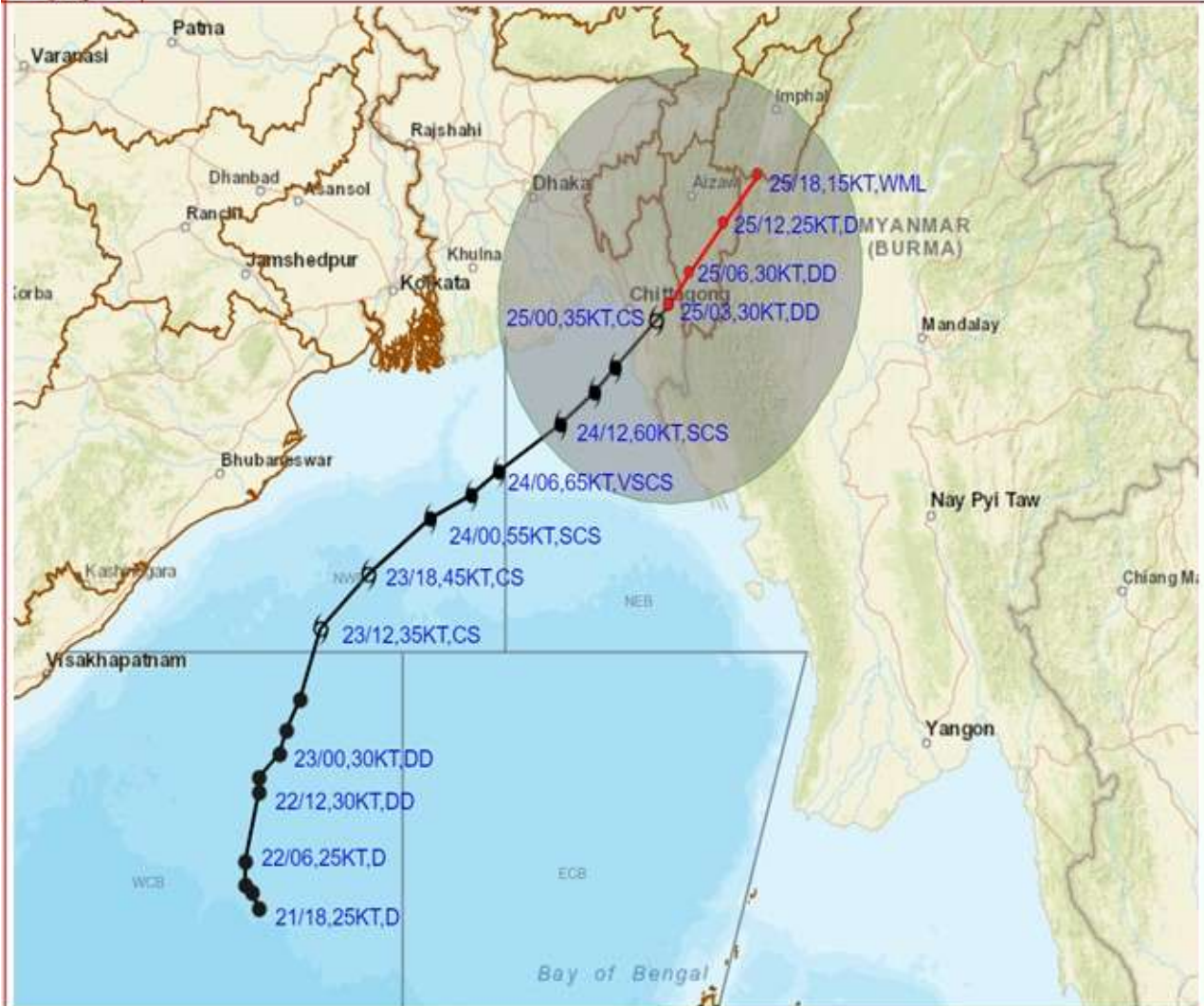
— OBSERVED TRACK

— FORECAST TRACK

▲ CONE OF UNCERTAINTY



OBSERVED AND FORECAST TRACK ALONGWITH QUADRANT WIND DISTRIBUTION OF DEEP DEPRESSION (REMNANT OF CYCLONIC STORM HAMOON) OVER SOUTHEAST BANGLADESH & ADJOINING MIZORAM BASED ON 0300 UTC (0830 IST) OF 25TH OCTOBER 2023.



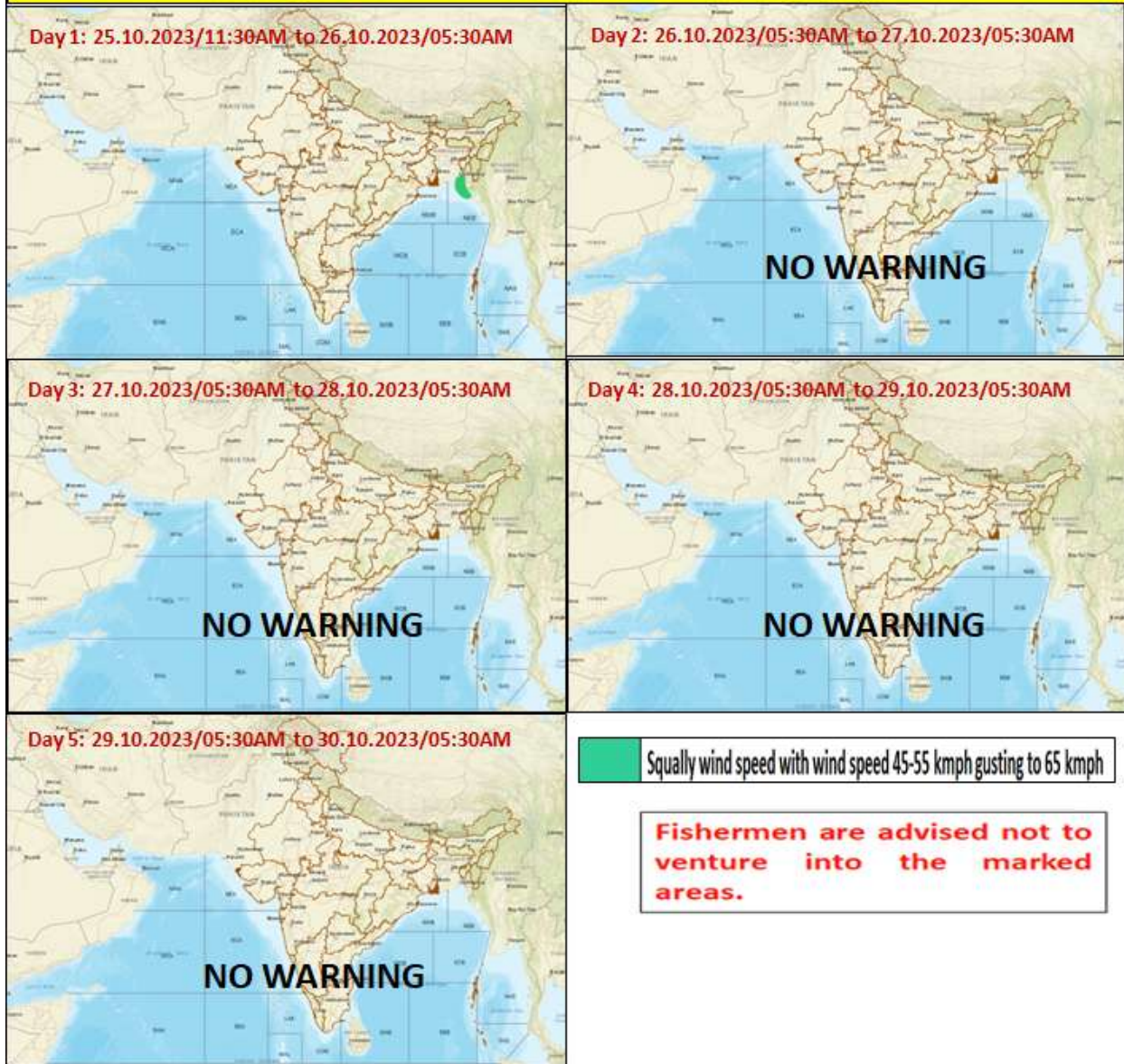
DATE/TIME IN UTC
 IST=UTC + 0530
 L: LOW PRESSURE AREA
 WML: WELL MARKED LOW PRESSURE AREA
 D: DEPRESSION (17-27 KT)
 DD: DEEP DEPRESSION (28-33 KT)
 CS: CYCLONIC STORM (34-47 KT)
 SCS: SEVERE CYCLONIC STORM (48-63KT)
 VSCS: VERY SEVERE CYCLONIC STORM (64-89 KT)
 ESCS: EXTREMELY SEVERE CYCLONIC STORM (90-119 KT)
 SuCS: SUPER CYCLONIC STORM (\geq 120 KT)

● LESS THAN 34 KT
 ○ 34-47 KT
 ● \geq 48 KT
 — OBSERVED TRACK
 — FORECAST TRACK
 — CONE OF UNCERTAINTY
 AREA OF MAXIMUM SUSTAINED WIND SPEED:
 — 28-33 KT (52-61 KMPH)
 — 34-49 KT (62-91 KMPH)
 — 50-63 KT (92-117 KMPH)
 — \geq 64 KT (\geq 118 KMPH)

IMPACT OVER THE SEA

MSW (knot/kmph)	Impact	Action
28-33 (52-61)	Very rough seas	Total suspension of fishing operations
34-49 (62-91)	High to very high seas	Total suspension of fishing operations
50-63 (92-117)	Very high seas	Total suspension of fishing operations
\geq 64 (\geq 118)	Phenomenal	Total suspension of fishing operations

Fishermen warning graphics



WEATHER WARNING GRAPHICS

SUBDIVISIONWISE WEATHER WARNING FOR DAY 1
(25-10-2023)



Subdivision Warning	— Dust Storm	Subdivision color
● Heavy Rain	↘ Strong Surface Winds	■ NO WARNING
— Heavy Snow	⚡ Heat Wave	■ WATCH (BE UPDATED)
⚡ Thunderstorms & Lightning	☄ Cold wave	■ ALERT (BE PREPARED)
⚡ Hailstorm	☁ Fog	■ WARNING (TAKE ACTION)

SUBDIVISIONWISE WEATHER WARNING FOR DAY 2
(26-10-2023)



Subdivision Warning	— Dust Storm	Subdivision color
● Heavy Rain	↘ Strong Surface Winds	■ NO WARNING
— Heavy Snow	⚡ Heat Wave	■ WATCH (BE UPDATED)
⚡ Thunderstorms & Lightning	☄ Cold wave	■ ALERT (BE PREPARED)
⚡ Hailstorm	☁ Fog	■ WARNING (TAKE ACTION)

SUBDIVISIONWISE WEATHER WARNING FOR DAY 3
(27-10-2023)



Subdivision Warning	— Dust Storm	Subdivision color
● Heavy Rain	↘ Strong Surface Winds	■ NO WARNING
— Heavy Snow	⚡ Heat Wave	■ WATCH (BE UPDATED)
⚡ Thunderstorms & Lightning	☄ Cold wave	■ ALERT (BE PREPARED)
⚡ Hailstorm	☁ Fog	■ WARNING (TAKE ACTION)

SUBDIVISIONWISE WEATHER WARNING FOR DAY 4
(28-10-2023)



Subdivision Warning	— Dust Storm	Subdivision color
● Heavy Rain	↘ Strong Surface Winds	■ NO WARNING
— Heavy Snow	⚡ Heat Wave	■ WATCH (BE UPDATED)
⚡ Thunderstorms & Lightning	☄ Cold wave	■ ALERT (BE PREPARED)
⚡ Hailstorm	☁ Fog	■ WARNING (TAKE ACTION)

SUBDIVISIONWISE WEATHER WARNING FOR DAY 5
(29-10-2023)



Subdivision Warning	— Dust Storm	Subdivision color
● Heavy Rain	↘ Strong Surface Winds	■ NO WARNING
— Heavy Snow	⚡ Heat Wave	■ WATCH (BE UPDATED)
⚡ Thunderstorms & Lightning	☄ Cold wave	■ ALERT (BE PREPARED)
⚡ Hailstorm	☁ Fog	■ WARNING (TAKE ACTION)

 WATCH(BE UPDATED)
 ALERT (BE PREPARED)
 WARNING (TAKE ACTION)